

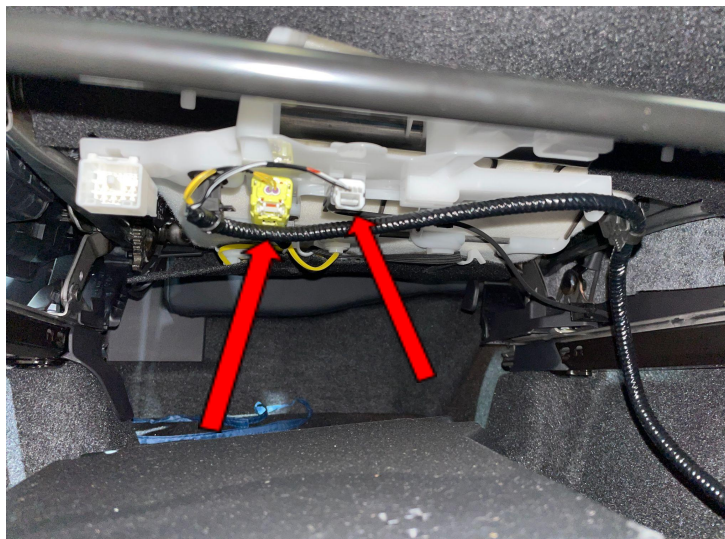
Toyota GR Yaris Seat Lowering Kit Installation Guide v2

Driver's Plate Installation

1. Raise the driver's seat to its maximum height using the seat-mounted raising/lowering handle.



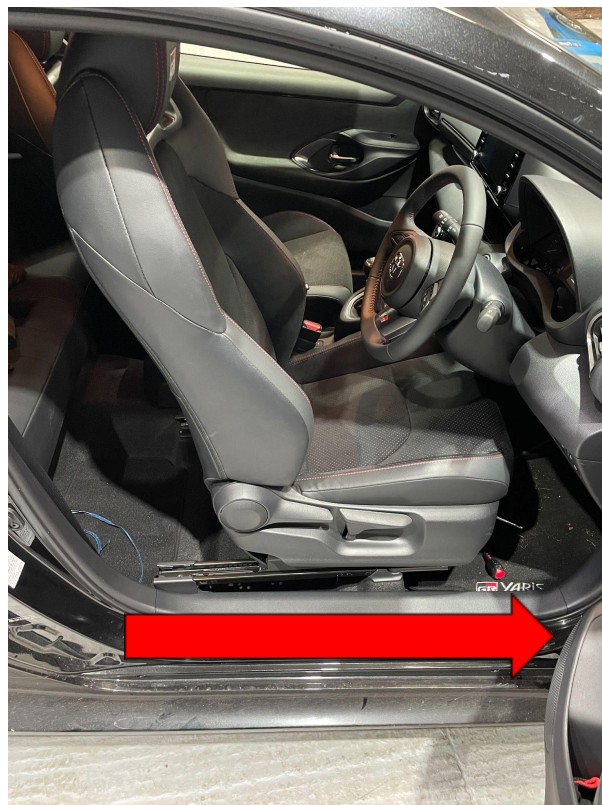
2. Reach underneath the front of the seat and remove the white and the yellow under seat electrical connectors. Using a flathead screwdriver can be helpful when it comes to removing the plugs.



3. Remove the two front bolts located in between the sliding seat rails using a ratchet with a T50 Torx head.



4. Slide the driver's seat towards the steering wheel on the rails using the seat slider handle at the front of the seat.



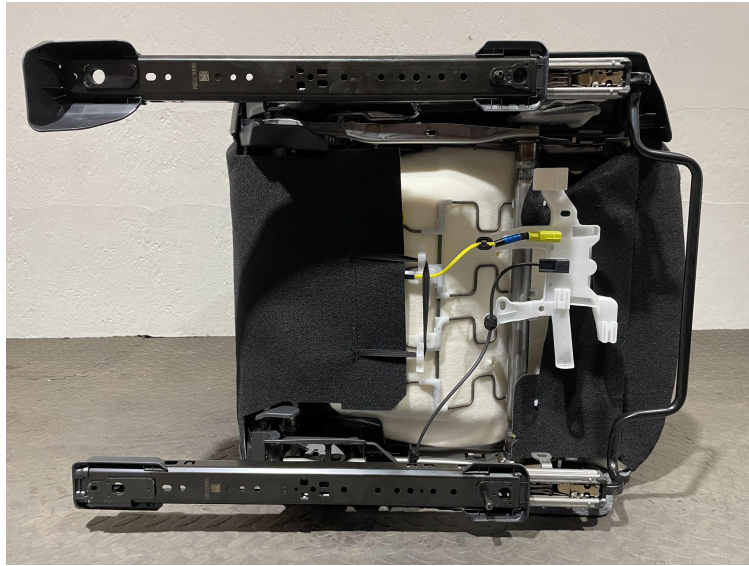
5. Undo the two rear bolts, also located in between the sliding seat rails using a ratchet with a T50 Torx head.



6. Remove the seat from the car. The easiest way to do this is to tilt the seat inwards towards the passenger's seat. Keep an eye out for the connector cables, and make sure they don't get caught up in the seat rail.



7. Rest the seat on its side, so you can access the underside.



8. Pry the plastic trim covers away from the seat rail using a flathead screwdriver. Be careful to not pry them too forcefully.





9. Remove the eight silver nuts attaching the seat to the slider rail using a 12mm spanner.



10. Once the eight nuts have been undone, remove the seat slider from the underside of the seat.

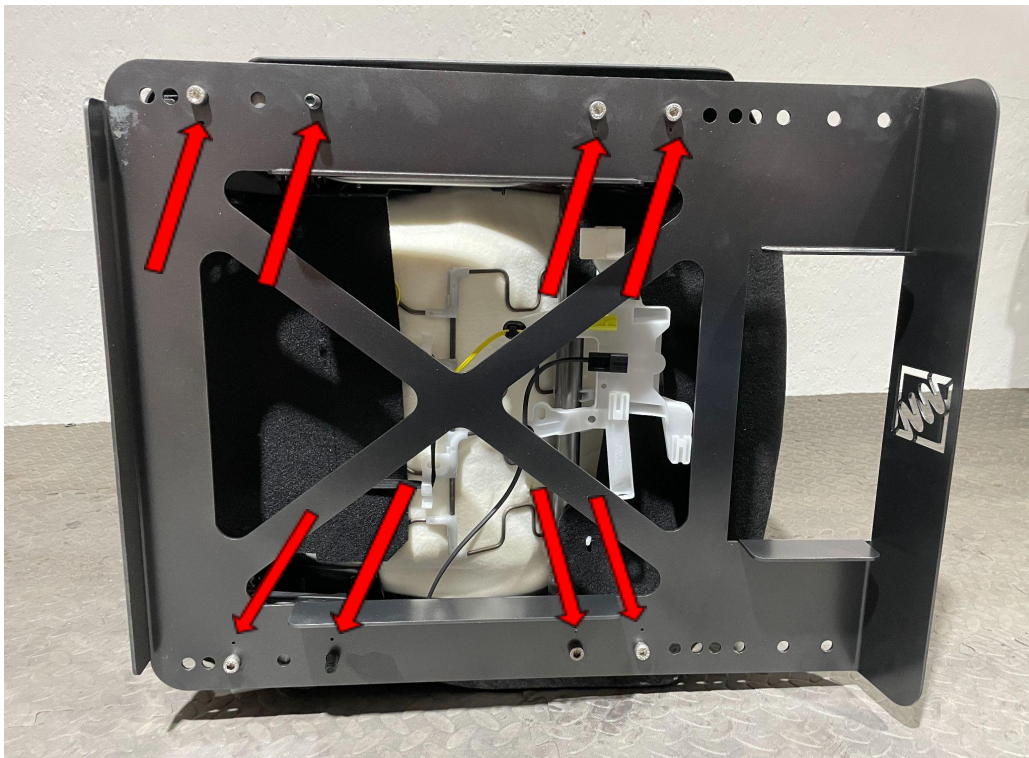


Seat Lowering Plate positioning guide

Our kit gives you the option of fitting the seat lowering plate in three different positions depending on what's comfortable, and how close you like to sit to the wheel.

Fitting Position 1

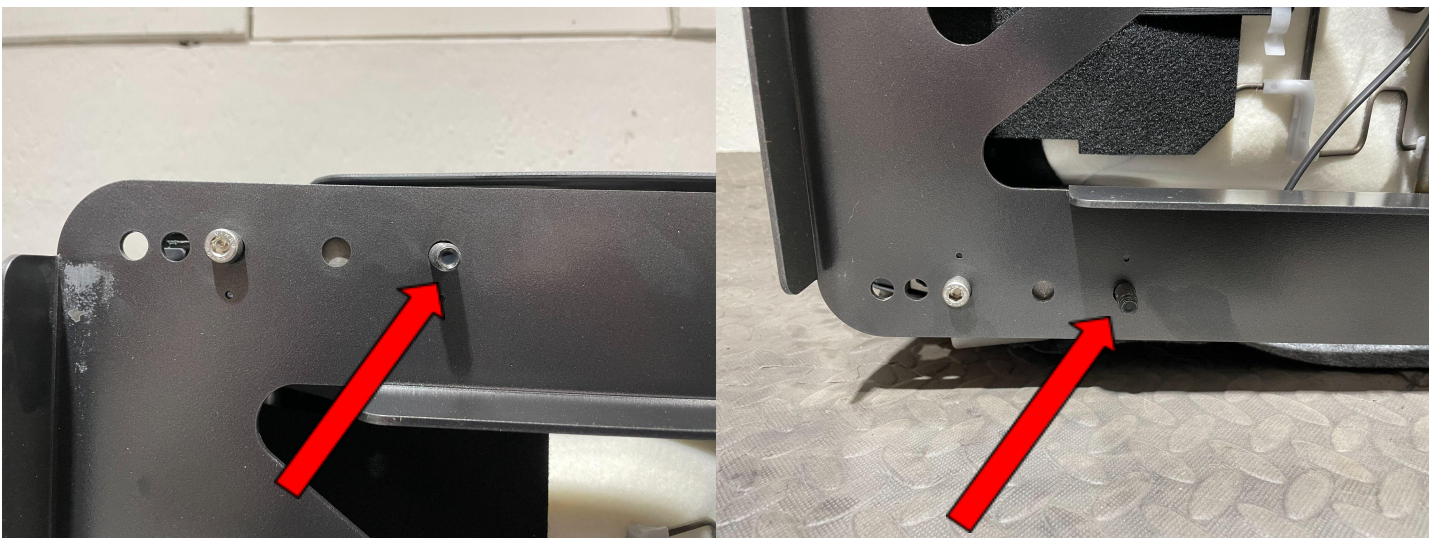
11. Insert the provided bolts through the lowering plate. The bolts must be inserted through the holes with smaller holes next to them.



12. Use the existing silver nuts to secure the bolts tightly. Use a 12mm screwdriver to secure them.



13. Use the seat-base-to-chassis mount bolt (black Toyota bolt) in the fifth hole from the back.



14. Use an allen key and a 12mm spanner to tighten the nuts.



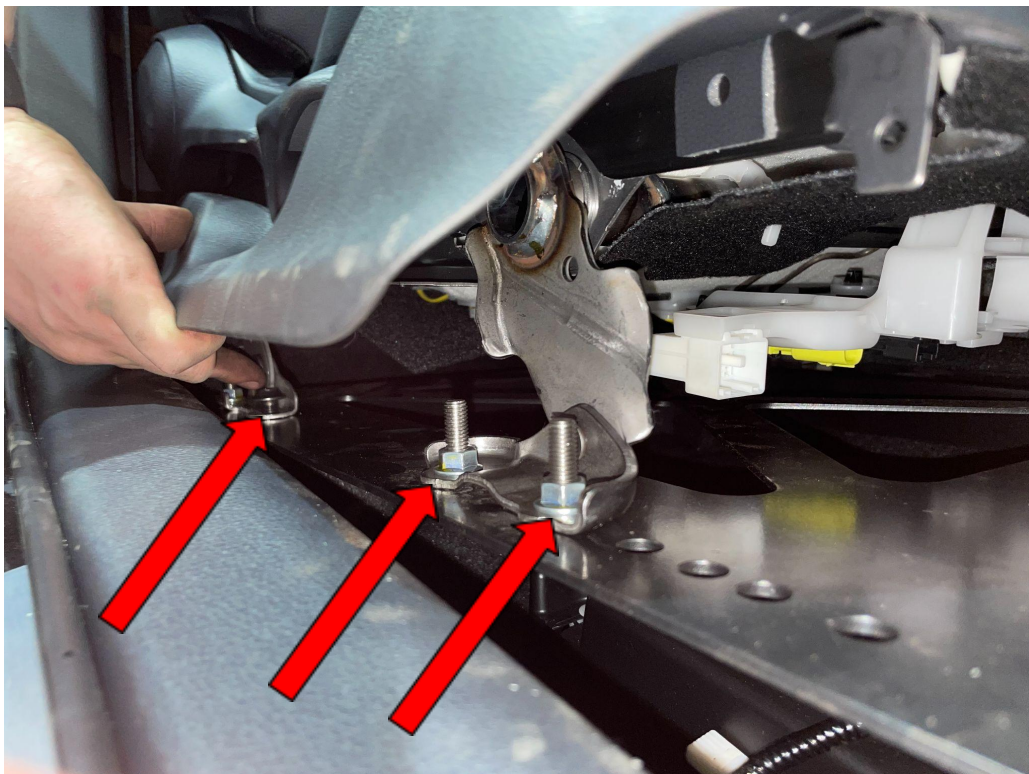
15. Put the seat back into the car. Be very careful not to scratch the exterior paint or any interior trim with the metal seat plate.



16. Tilt the passenger's seat forwards using the tilt and slide mechanism to allow access to the rear bolts on the driver's seat.
17. Maneuvre the seat to try and locate the bolts into the chassis turrets where the seat was originally mounted.
18. Pull the lower plastic trim from the outside of the driver's seat to help access the rear bolts.

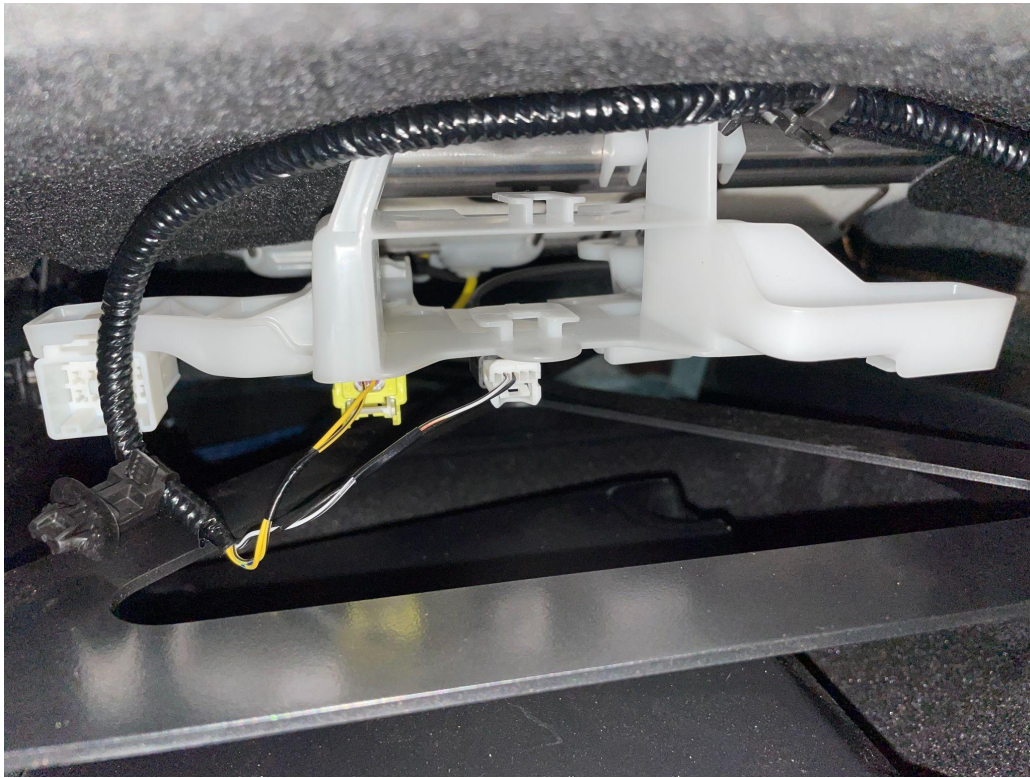


19. Tighten the bolts securely using a 12mm spanner.



20. Refit the plastic trim onto the side of the seat.

21. Reconnect the underseat connectors - ensure to reconnect them in the right holes.



Please Note - The driver's seat can no longer be lowered into its lowest position using the seat lowering lever, but our seat lowering plate accounts for this.

Fitting Position 2

PLEASE NOTE - Fitting the seat in this position will require the use of silver spacers that we have provided.

1. Don't attach the plate to the seat just yet.
2. Locate the most rearward bolt near the transmission tunnel facing upwards with a spacer, and then place the plate into the car.



3. Tighten the bolts using a 12mm spanner.
4. Remove the plastic sill trim that runs along the door sill. This will give you better access to the bolts and spacers.



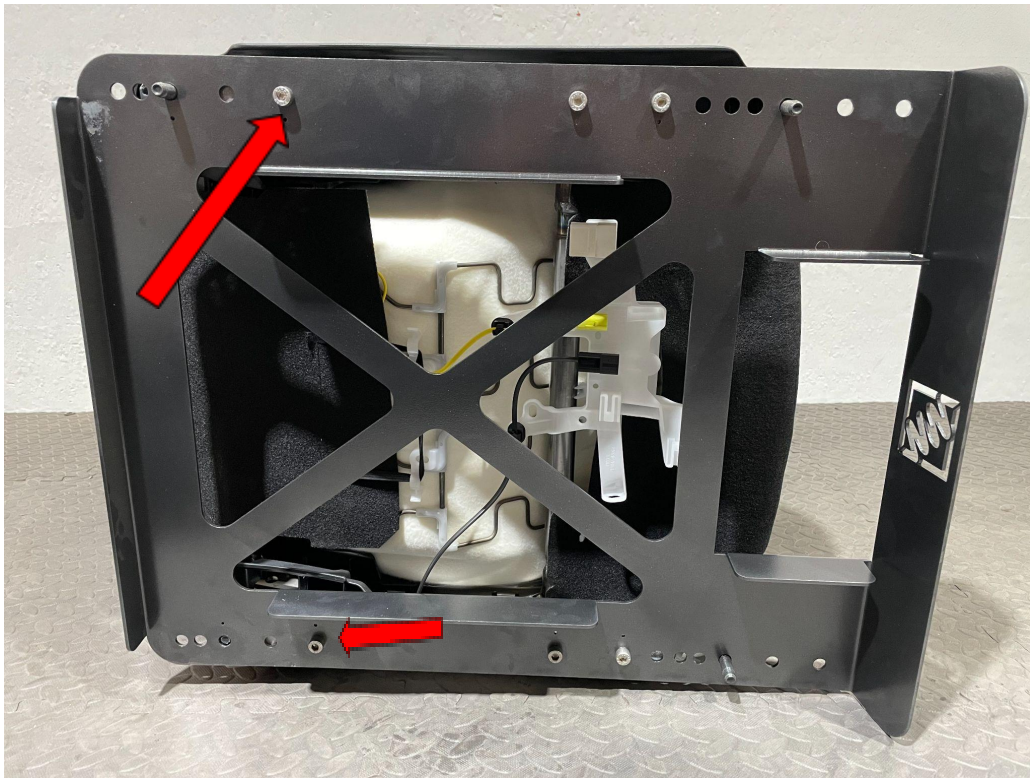
5. Insert the other upwards facing bolts and put spacers on top of them between the seat and the lowering plate.
6. Move the wiring loom that runs along the door sill out of the way to give easy access.
7. Lift the front of the seat onto the plate.
8. Reach underneath the back and then push the bolt up through the plate.
9. Place the nuts on top of the bolts whilst underneath the seat and tighten by hand.
(Use a torch to help you see in the dark underneath the seat)



10. Use a 12mm spanner and allen key to tighten the nuts onto the bolts

Fitting Position 3

1. Place the black Toyota bolts into the third inward hole from the rear of the seat plate.



2. Insert the black Toyota bolt downwards through the rearmost mounting position denoted by the rear-most small hole.



3. Run the inner Toyota bolt through the seat and the mounting plate, BEFORE putting the seat in the car. Use a ratchet with a T50 Torx head to push the bolt through. There may be some resistance, but it will reduce as the bolt begins to pass through.
4. Put the seat back in the car.



5. Locate the front bolts first - the rear bolts will then locate more easily.
6. Tighten the nuts on the bolts and spacers with your fingers to secure the plate to the chassis.
7. Now tighten the nuts securely using a 12mm spanner.

Passenger's Seat Installation Guide

These instructions are to fit the passenger's seat lowering plate into the most common position, which is the furthest back position. Other seating positions are available, similar to the driver's seat.

1. Reach underneath the front of the seat and remove the two under seat electrical connectors. Using a flathead screwdriver can be helpful when it comes to removing the plugs.



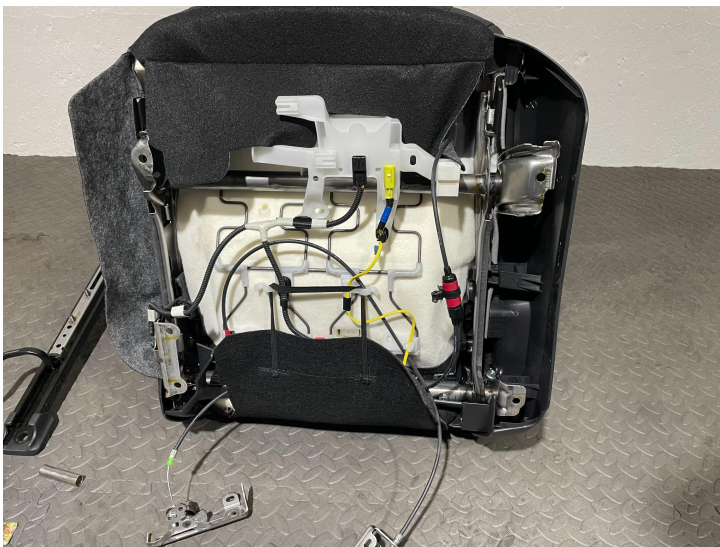
2. Remove four bolts holding the seat to the floor of the car.
3. Tilt the seat inwards to remove it more easily from the car.
4. Remove the silver Toyota wheel nuts from the seat slider rail.
5. Remove the black clip on the underside of the seat using a flathead screwdriver for leverage.



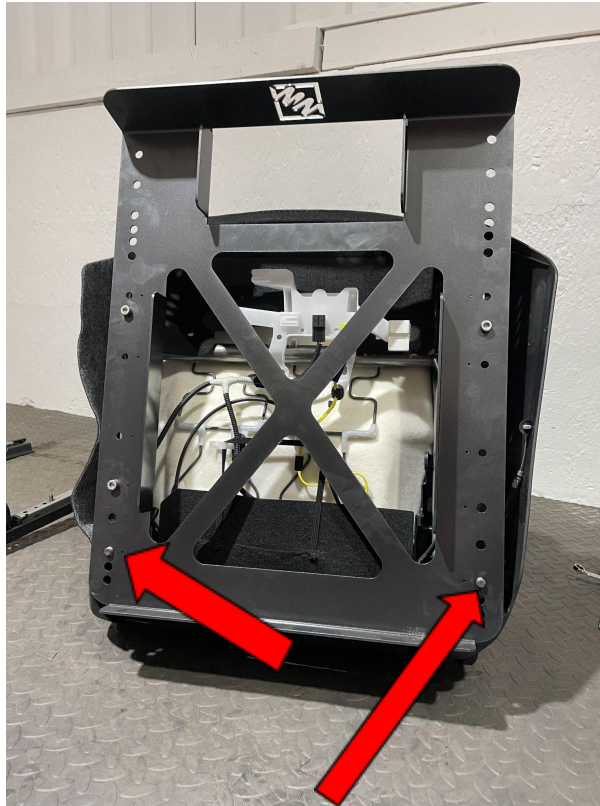
6. Remove the green seat tilt and slide mechanism connector with long nose pliers.



7. Remove the five bolts from the inside slider rail.
8. Remove the four bolts from the outside slider rail.
9. Remove the brackets as shown, and tuck the cables underneath the black felt trim of the seat.



10. Insert three provided silver bolts and two black Toyota bolts. The Toyota bolts are inserted into the rearmost position.



11. Fit each bolt with one of the spacers provided.
12. Be careful when fitting the black Toyota bolts through the holes as they may be tight. They will eventually slide through.
13. Carefully refit the seat in the car.
14. Locate and then tighten front nuts, then tighten with a screwdriver.
15. Remove the side sill trim if you need to help access the nuts.
16. Initially tighten the nuts using your fingers to help secure the plate to the chassis.
17. Now, tighten the nuts securely using a 12mm spanner.